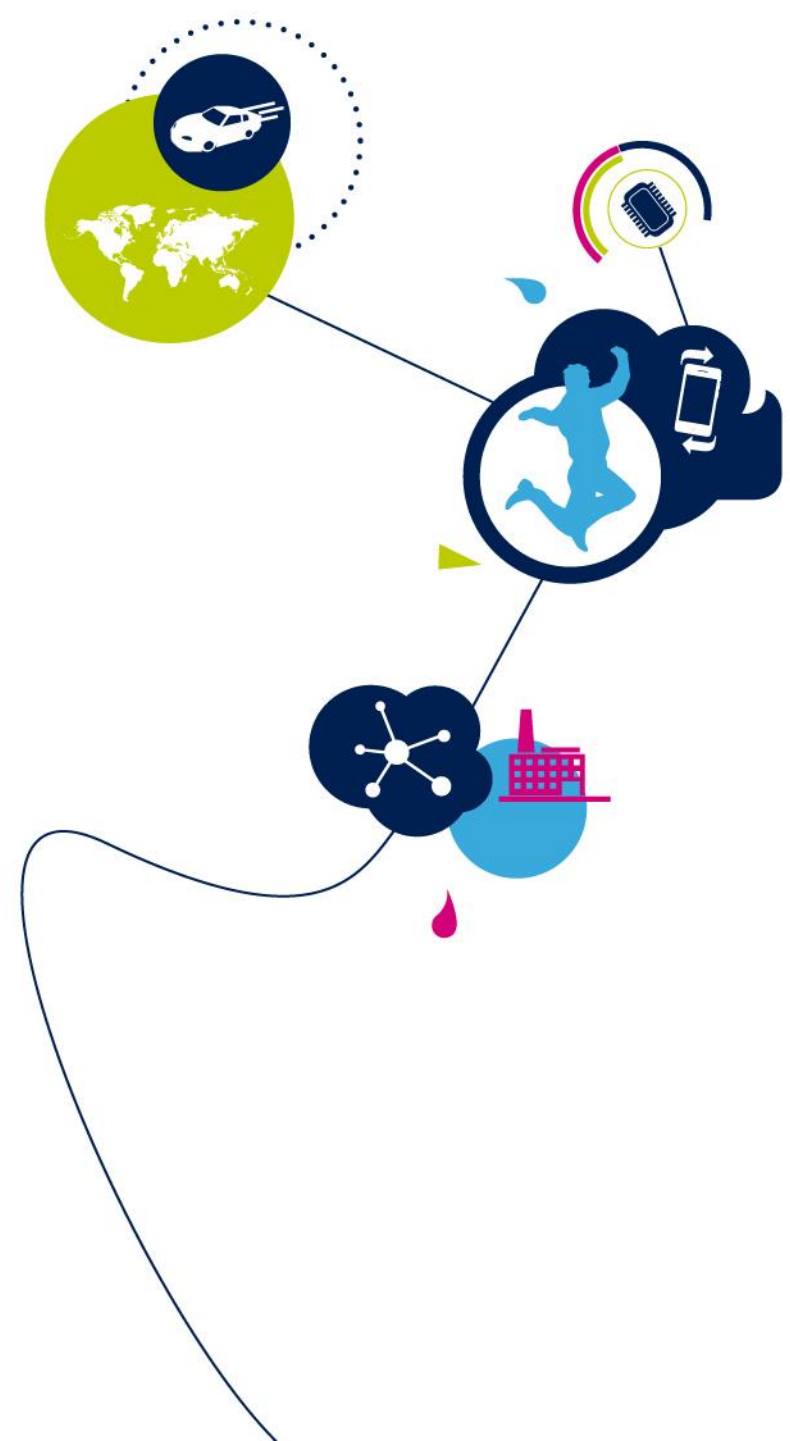


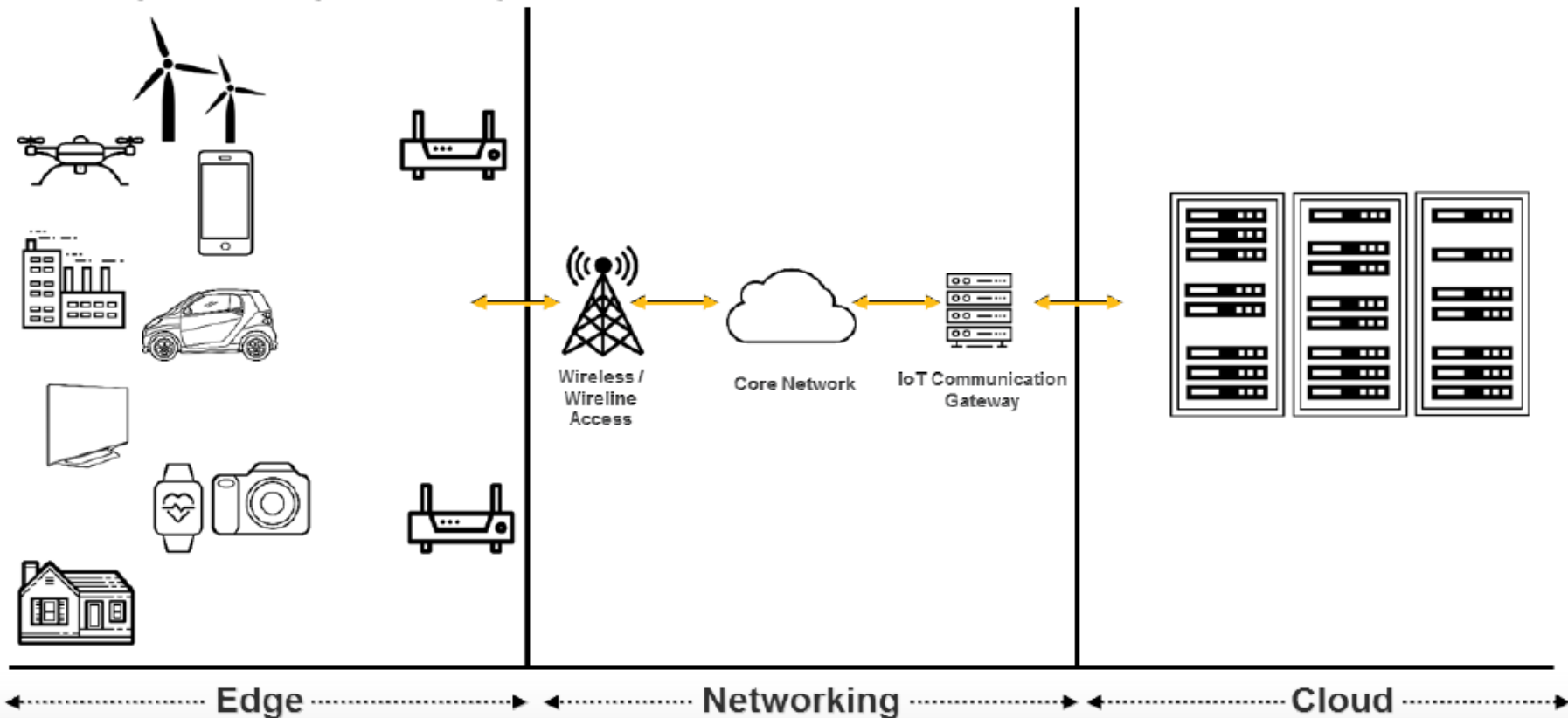
Success stories of Edge Computing and AI in Industry

Marcello Coppola



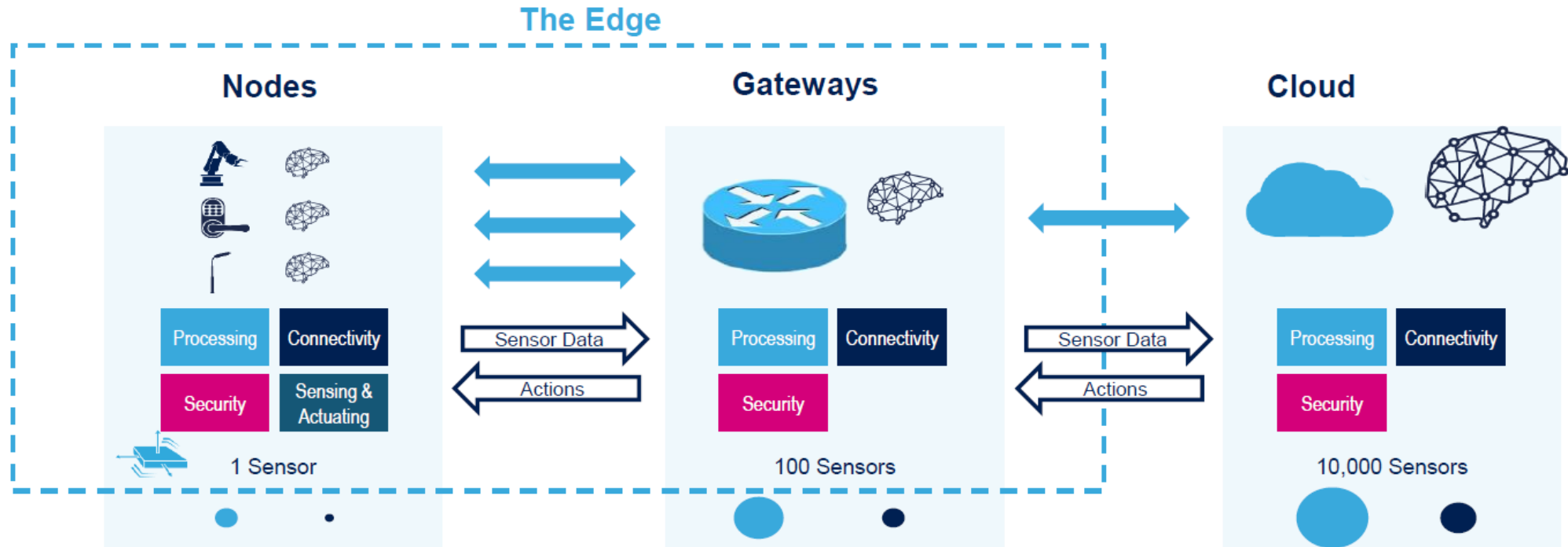
Rapidly Emerging Edge Computing Trend

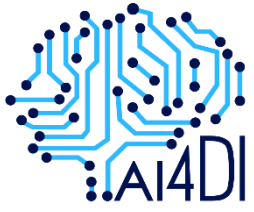
Driven by Latency, Privacy, and Bandwidth Limitations



"Currently around 10% of enterprise-generated data is created and processed outside a traditional centralized data center or cloud. By 2022... this figure will reach 50%." - Gartner

From the Edge to the Cloud





The Champagne use case

Edge AI Architecture

